



**REGIONAL SPECIALISED METEOROLOGICAL CENTRE-TROPICAL CYCLONES, NEW DELHI
SPECIAL TROPICAL WEATHER OUTLOOK**

DEMS-RSMC SPECIAL TROPICAL CYCLONES NEW DELHI DATED 17.06.2023

SPECIAL TROPICAL WEATHER OUTLOOK FOR NORTH INDIAN OCEAN (THE BAY OF BENGAL AND THE ARABIAN SEA) VALID FOR NEXT 120 HOURS ISSUED AT 1445UTC OF 17.06.2023 BASED ON 1200 UTC OF 17.06.2023.

SUB: DEEP DEPRESSION (REMNANT OF CYCLONIC STORM 'BIPARJOY') WEAKENED INTO A DEPRESSION OVER SOUTH RAJASTHAN AND ADJOINING NORTH GUJARAT

THE DEEP DEPRESSION (REMNANT OF CYCLONIC STORM 'BIPARJOY') OVER SOUTHWEST RAJASTHAN AND ADJOINING GUJARAT MOVED EAST-NORTHEASTWARDS WITH A SPEED OF 12 KMPH DURING PAST 6-HOURS, WEAKENED INTO A DEPRESSION AND LAY CENTERED AT 1200 UTC OF TODAY, THE 17TH JUNE, 2023 OVER SOUTH RAJASTHAN AND ADJOINING NORTH GUJARAT NEAR LATITUDE 25.6°N AND LONGITUDE 72.5°E, ABOUT 30 KM NORTH-NORTHWEST OF JALORE(42439) AND 90 KM SOUTH-SOUTHWEST OF JODHPUR(42339).

IT IS VERY LIKELY TO CONTINUE TO MOVE EAST-NORTHEASTWARDS AND MAINTAIN THE INTENSITY OF DEPRESSION TILL AROUND 0300 UTC OF 18TH JUNE.

AS PER INSAT 3D IMAGERY, ASSOCIATED SCATTERED TO BROKEN LOW/MEDIUM CLOUDS WITH EMBEDDED INTENSE TO VERY INTENSE CONVECTION LAY OVER SOUTH RAJASTHAN AND ADJOINING AREAS OF SOUTHEAST PAKISTAN AND NORTH GUJARAT AREA. MINIMUM CLOUD TOP TEMPERATURE IS MINUS 93°C.

ASSOCIATED MAXIMUM SUSTAINED WIND SPEED (MSW) IS 25 KNOTS GUSTING TO 35 KNOTS. THE ESTIMATED CENTRAL PRESSURE IS 992 HPA.

AT 1200 UTC, BARMER (42435) REPORTED MEAN SEA LEVEL PRESSURE (MSLP) OF 994.8 HPA, 24 HOUR PRESSURE FALL (P24) OF -2.1 HPA AND MAXIMUM SUSTAINED WIND SPEED (MSW) OF 270°/08KT. JHODPUR (42339) REPORTED MSLP OF 992.8 HPA, P24 OF -5.3 HPA AND MSW OF 090°/ 05KT.

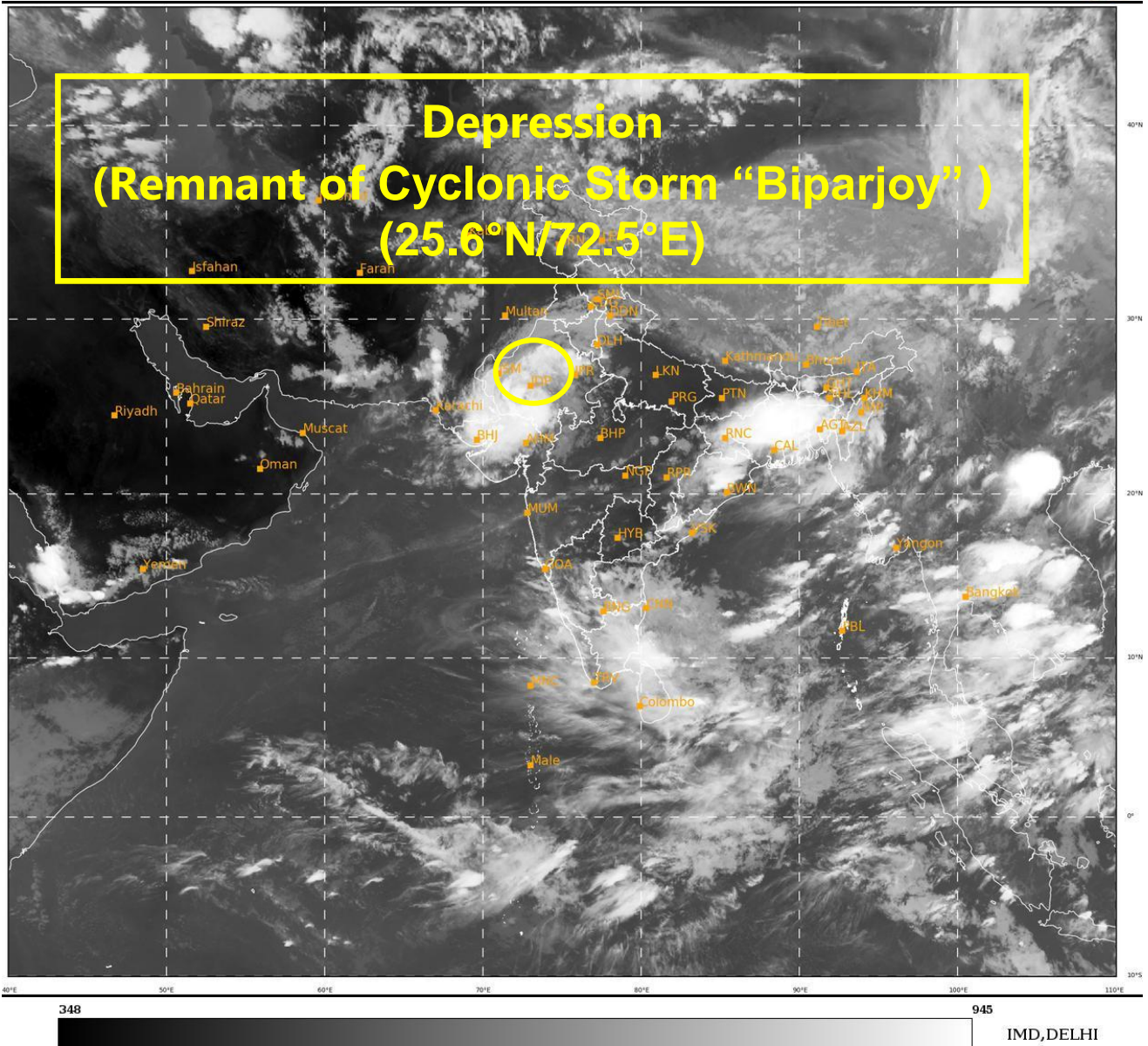
REMARKS:

THE LOW LEVEL VORTICITY IS AROUND $200-250 \times 10^{-6} \text{S}^{-1}$ & IS LOCATED TO THE SOUTHWEST OF THE SYSTEM CENTRE. LOW LEVEL CONVERGENCE IS ABOUT $10 \times 10^{-5} \text{S}^{-1}$ TO THE SOUTHWEST OF THE SYSTEM CENTRE AND UPPER LEVEL DIVERGENCE IS ABOUT $30 \times 10^{-5} \text{S}^{-1}$ TO THE SOUTHWEST OF SYSTEM CENTRE. VERTICAL WIND SHEAR IS WEAK (10-20 KNOTS) OVER THE SYSTEM AREA. THE SYSTEM IS STILL IN A WEAK WIND SHEAR, THUS IT IS WEAKENING GRADUALLY.

Cloud distribution: (a) Isolated: <25%, Scattered:25-50%, Broken: 51-75%, Solid:>75%, Convection Intensity: (a) Weak: Cloud Top Temperature (CTT) >-25°C, (b) Moderate: CTT: - 25°C to -40°C, (c) Intense: CTT: - 41°C to -70°C and (d) Very Intense: : Less than -70°C
PROBABILITY OF CYCLOGENESIS (FORMATION OF DEPRESSION):NIL: 0%, LOW: 1-33%, , MODERATE: 34-66% AND HIGH: 67-100%
This is a guidance Bulletin for WMO/ESCAP Panel Member countries. Visit respective National websites for Country specific Bulletins

BASED ON ENVIRONMENTAL CONDITIONS AND NWP MULTI-MODEL FORECASTS THE SYSTEM IS VERY LIKELY TO MOVE NEARLY EAST-NORTHEASTWARDS AND MAINTAIN THE INTENSITY OF DEPRESSION TILL AROUND 0300 UTC OF 18TH JUNE.

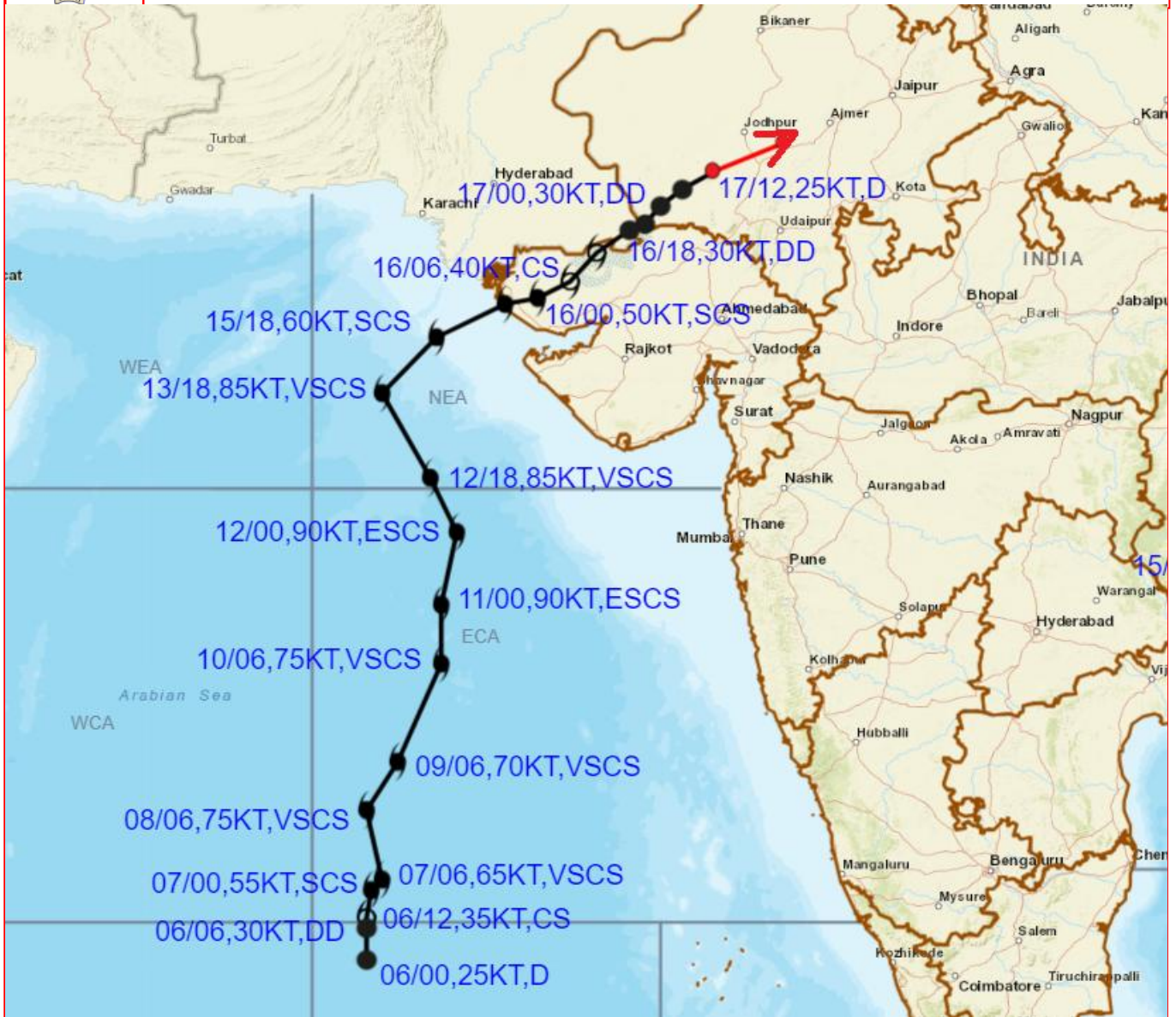
DR RK JENAMANI
SC-G
RSMC NEW DELHI



Cloud distribution: (a) Isolated: <25%, Scattered:25-50%, Broken: 51-75%, Solid:>75%, Convection Intensity: (a) Weak: Cloud Top Temperature (CTT) >-25°C, (b) Moderate: CTT: - 25°C to -40°C, (c) Intense: CTT: - 41°C to -70°C and (d) Very Intense: : Less than -70°C
PROBABILITY OF CYCLOGENESIS (FORMATION OF DEPRESSION):NIL: 0%, LOW: 1-33%, , MODERATE: 34-66% AND HIGH: 67-100%
This is a guidance Bulletin for WMO/ESCAP Panel Member countries. Visit respective National websites for Country specific Bulletins



OBSERVED AND FORECAST TRACK OF DEPRESSION (REMANANT OF CYCLONIC STORM BIPARJOY) OVER SOUTH RAJASTHAN AND ADJOINING NORTH GUJARAT BASED ON 1200 UTC (1730 IST) OF 17TH JUNE 2023.



DATE/TIME IN UTC

IST=UTC + 0530

L: LOW PRESSURE AREA

WML: WELL MARKED LOW PRESSURE AREA

D: DEPRESSION (17-27 KT)

DD: DEEP DEPRESSION (28-33 KT)

CS: CYCLONIC STORM (34-47 KT)

SCS: SEVERE CYCLONIC STORM (48-63KT)

VSCS: VERY SEVERE CYCLONIC STORM (64-89 KT)

ESCS: EXTREMELY SEVERE CYCLONIC STORM (90-119 KT)

SuCS: SUPER CYCLONIC STORM (≥ 120 KT)

● LESS THAN 34 KT

○ 34-47 KT

○ ≥ 48 KT

— OBSERVED TRACK

— FORECAST TRACK

▲ CONE OF UNCERTAINTY